



# Galectin-1 Polyclonal Antibody

<b>Catalog No</b>	YP-Ab-00403
<b>Isotype</b>	IgG
<b>Reactivity</b>	Human;Rat;Deer
<b>Applications</b>	WB;ELISA
<b>Gene Name</b>	LGALS1
<b>Protein Name</b>	Galectin-1
<b>Immunogen</b>	Synthesized peptide derived from Galectin-1 . at AA range: 10-90
<b>Specificity</b>	Galectin-1 Polyclonal Antibody detects endogenous levels of Galectin-1 protein.
<b>Formulation</b>	Liquid in PBS containing 50% glycerol, 0.5% BSA and 0.02% sodium azide.
<b>Source</b>	Polyclonal, Rabbit,IgG
<b>Purification</b>	The antibody was affinity-purified from rabbit antiserum by affinity-chromatography using epitope-specific immunogen.
<b>Dilution</b>	Western Blot: 1/500 - 1/2000. ELISA: 1/40000. Not yet tested in other applications.
<b>Concentration</b>	1 mg/ml
<b>Purity</b>	≥90%
<b>Storage Stability</b>	-20°C/1 year
<b>Synonyms</b>	LGALS1; Galectin-1; Gal-1; 14 kDa laminin-binding protein; HLBP14; 14 kDa lectin; Beta-galactoside-binding lectin L-14-I; Galaptin; HBL; HPL; Lactose-binding lectin 1; Lectin galactoside-binding soluble 1; Putative MAPK-activating protein P
<b>Observed Band</b>	15kD
<b>Cell Pathway</b>	Secreted, extracellular space, extracellular matrix . Cytoplasm . Secreted . Can be secreted; the secretion is dependent on protein unfolding and facilitated by the cargo receptor TMED10; it results in protein translocation from the cytoplasm into the ERGIC (endoplasmic reticulum-Golgi intermediate compartment) followed by vesicle entry and secretion. .
<b>Tissue Specificity</b>	Expressed in placenta, maternal decidua and fetal membranes. Within placenta, expressed in trophoblasts, stromal cells, villous endothelium, syncytiotrophoblast apical membrane and villous stroma. Within fetal membranes, expressed in amnion, chorioamniotic mesenchyma and chorion (at protein level). Expressed in cardiac, smooth, and skeletal muscle, neurons, thymus, kidney and hematopoietic cells.
<b>Function</b>	function:May regulate apoptosis, cell proliferation and cell differentiation. Binds beta-galactoside and a wide array of complex carbohydrates. Inhibits CD45 protein phosphatase activity and therefore the dephosphorylation of Lyn kinase.,online information:Galectin-1,similarity:Contains 1 galectin



domain.,subunit:Homodimer. Binds LGALS3BP. Interacts with CD2, CD3, CD4, CD7, CD43 and CD45.,tissue specificity:Cardiac, smooth, and skeletal muscle, neurons, thymus, kidney, placenta and hematopoietic cells.,

**Background**

The galectins are a family of beta-galactoside-binding proteins implicated in modulating cell-cell and cell-matrix interactions. This gene product may act as an autocrine negative growth factor that regulates cell proliferation. [provided by RefSeq, Jul 2008],

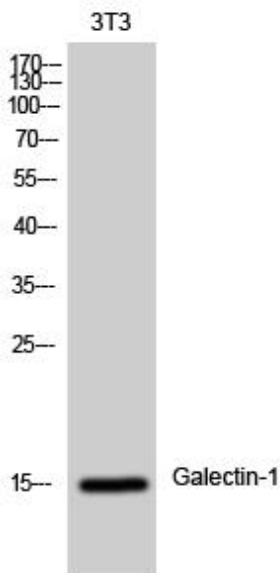
**matters needing attention**

Avoid repeated freezing and thawing!

**Usage suggestions**

This product can be used in immunological reaction related experiments. For more information, please consult technical personnel.

**Products Images**



Western Blot analysis of 3T3 cells using Galectin-1 Polyclonal Antibody diluted at 1:500